



Frogwood 2019 Collaborative Artwork

This collection of art works resulting from Frogwood 2019, like the 47 artists who created it, has marvelous spontaneity, depth, and range. Starting from scratch, these artists collaborated in the creation of over 150 pieces in only five days. Hundreds of fine craft techniques – forging, myriad surface treatments, weaving, and keen-edged woodworking - were applied to materials ranging from precious and semi-precious metals, to iron, steel, copper and brass, to found objects, to exotic and fine woods, to natural and man-made fibers, to glass and plastics, to fiber-based inks on hand-crafted papers; the complete list is too long for this space.

Frogwood participants include artists from many stages of life and practice. Recent high-school graduates find themselves on level ground next to seasoned master makers with decades of training and practice, each contributing to the other's experience in equal measure. Within a very brief time, these artists forge relationships where aesthetics become a medium of exchange, where a community of craft facilitates art at the highest levels.

Through Frogwood's fundraising efforts and generous gifts of its growing community of donors and collectors, many of our artists attend Frogwood on a fee-subsidized basis that covers room, board, and materials. The pieces created during each week-long event are made available at auction or through other arrangements for sale. Sales proceeds comprise a significant portion of the funds necessary to make this educational event accessible to artists who otherwise would be unable to participate.

Frogwood is not an experience easily described. I watch with awe the intensity, the vibrant aesthetic energy that goes into every Frogwood piece during our collaborative events. Further, the experience has unique longevity, manifesting itself for months and years after participating artists have returned to their studios and workspaces. As an avid observer of creative processes, I find Frogwood is quite simply remarkable.

Tom Willing, President

Frogwood 2019 Participants



Artists listed alphabetically: Kathleen Abood, Sally Ault, Geoffrey Bowton, Phil Cason, Robert Chiavarini, Rosey Covert, Rick Crawford, Nick Cupell, Tami Dean, Neal Fegan, Jesse Felling, Mike Free, Ron Gerton, Cydney Gordon, Jerry Harris, Carol Horvath, Sandy Huse, Winona Hwang, Janis Johnson, Stephen Jones, Eleanor Gale Karrick, Kate LaGrand, Tai Lake, Eric Lofstrom, Owen Lowe, Lee Mahoney, William Moore, Kathryn Cellerini Moore, Stephen Newberry, Angela Ridgway, Janet Ronacher, Scott Ramage, Joe Seltzer, Kevin Shluka, Lisa Sipe, Rory Sparks, Steve Talbot, Peter Underwood, Marjin Wall, Jeffrey Weber, Shannon Weber, Steve White, Greg Wilbur, David Williams, Tom Willing, Kimberly Winkle, and John Wirth.

A Brush With Art



Artists Ron Gerton, Tom Willing

Description Brushes, aluminum, brass, wood; 11"d x24"

Acer Macrophyllum



Artists Geoffrey Bowton, David Williams, Nitzan Lilie, Winona Hwang

Description Steel, glass (pate de verre), copper; 14"d x12"

Aeolian Cactus



Artists Mike Free, Eric Lofstrom

Description Wood (tupelo), acrylic paint, brass, copper, enamel, synthetic fiber; 6”d x4”

Afterglow



Artists Shannon Weber, Tami Dean, Ron Gerton

Description Copper; 8"d x3.5"

I love reclaimed. I love anything that has a past story, known or not. Holes lipped around vessel that tailings were stitched on. First the outside, then the inside and finished with weaving them together.

All Things Merge



Artists Lisa Marie Sipe, Angela Ridgway

Description Wood, copper, photography, encaustic; 30" x4" x3"

This piece is about the Columbia River and how everything comes together at some point.

Aloha Spoon



Artists Greg Wilbur, Kathleen Abood, Tami Dean

Description Shell, sea urchin spine, pink coral, metallic leather; 1" x 1/2" x 6"; spoon project

Beachcomber's delight – all found objects from the shoreline.

An Artist's View of the Extra-Dimensionality



Artists Scott Ramage, Rosey Covert, Tom Willing

Description Wood (maple and willow), brass; 18"d x14"

We typically think of a black hole as one way in & no way out. The artist helps us see both the way in & out by showing the dimensionality beyond space and time.

Animal, Vegetable, Mineral, or Sushi?



Artists John Wirth

Description Copper, wood (spalted maple), patina; 7" x6" x2.5"

Antics



Artists Marjin Wall, Jerry Harris, Mike Free, Sally Ault

Description Wood (leyland cyprus and ebony), copper; 10" x6" x3.5"

Antsy



Artists Mike Free, Marjin Wall, Tami Dean

Description Wood (maple, cedar, juniper, and ebony), copper; 18"d x22"

I was inspired by what ants can do with trees.

Apposing Lines



Artists Lisa Marie Sipe, Angela Ridgway, Winona Hwang

Description Wood, copper, encaustic on wood panel; 14" x11" x2"

Attached to the Rest of the World



Artists Lisa Marie Sipe, Kevin Shluka

Description Wood, bird's nest, epoxy, encaustic on wood; 8" x10 "x4"

The nest was a gift from an artist. The work is how we are all connected – even though we have our own spaces – the Earth binds us.

Awakening



Artists Tai Lake, Rose Covert, Ron Gerton

Description Wood (maple and willow), bark (willow, fig, and cedar), copper and acrylic paints;
56" x24" x34"; Live Auction Item

Black Beard



Artists Kathleen Abood, Kathryn Cellerini Moore

Description Mongolian sheepskin, leather lace; 1.5" x10" x9"

Black Beard provides instant wisdom & mirth!

Blue Stone Feisty Satchel



Artists Kathleen Abood, Carol Horvath

Description Leather (elk), gemstone; 10" x9" x1"

Bulbs Over Bombs



Artists Lisa Marie Sipe, Rosey Covert

Description Wood, leather, waxed linen, lacquer, brass paint; 5"d x16"

Cairn For a Lost Country

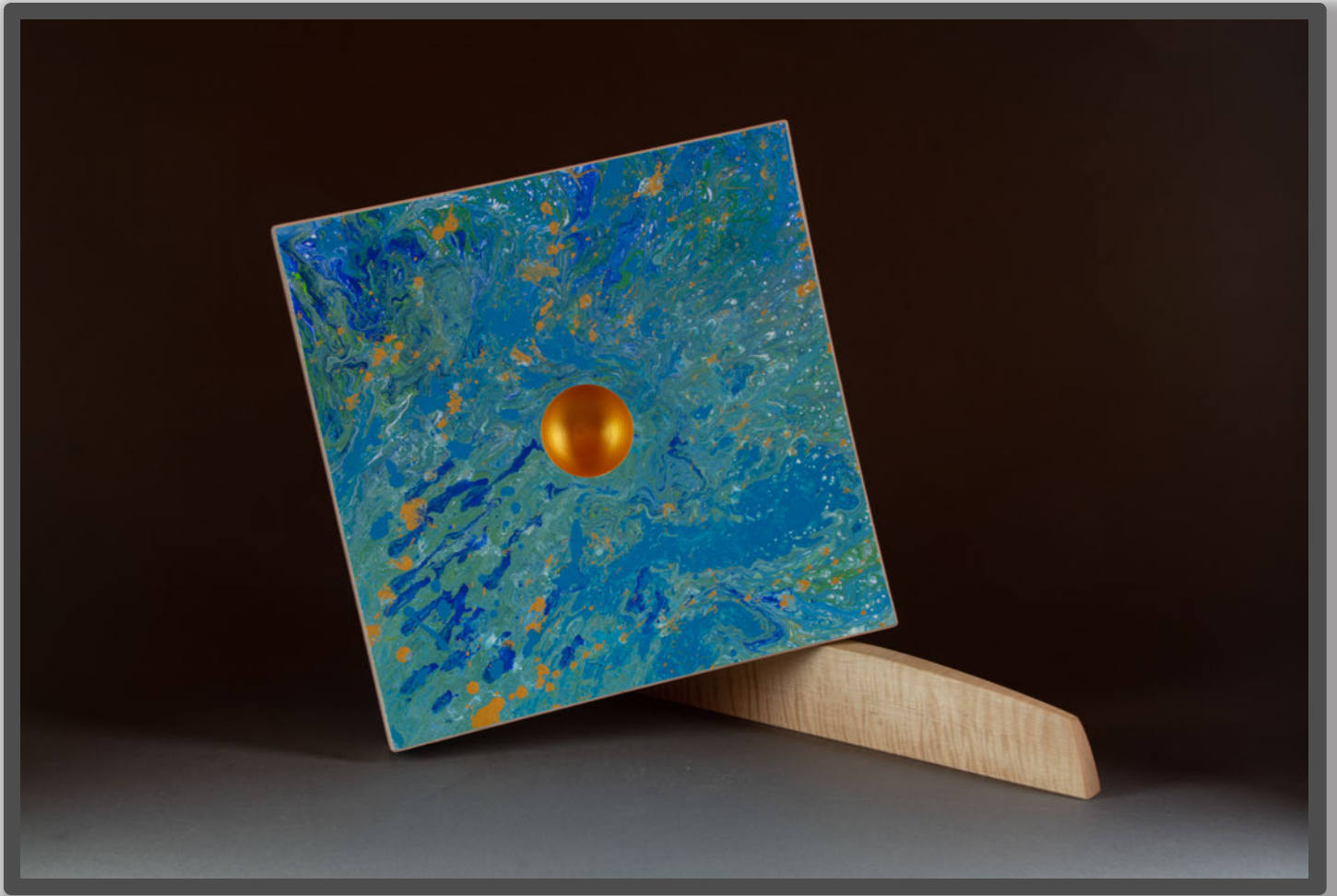


Artists Tami Dean, Mike Free, Janis Johnson, Eric Lofstrom

Description Rock (basalt), wood (maple), silk; 9"d x5"

Our planet is in trouble; our country is lost; a broken cairn lights the way.

Calm Amidst the Turbulence



Artists Eric Lofstrom, Tai Lake, Kevin Shluka

Description Wood (maple), acrylic; 20" x12" x12"; Live Auction Item

Inspired by the quest for serenity when life feels out of control.

Camp Colton Botanical Ink & Mop Brush



Artists Rory Sparks

Description 3 bottles of ink: Staghorn Lichen, Oregon Grape, Alder Cone; 6" x2" mop brush

Camp Confluence - A Musing on Collaboration



Artists Shannon Weber, Kevin Shluka, Greg Wilbur

Description Wood, metal, stone, earth, plants, linen thread, concrete; 42" x10" x24"

Careful What You Wish For



Artists Robert Chiavarini

Description Wood (rosewood); 12" x2" x2"; spoon project

Cedar Moon



Artists Greg Wilbur, Carol Horvath

Description Copper and wood (cedar); 36"d x 6"

Cinderella Spoon



Artists Tai Lake, Sandy Huse

Description Wood (Douglas fir), paint, metal leaf; 5" x10" x1.5"; spoon project

Clarity



Artists Angela Ridgway, Kevin Shluka

Description Wood, steel, oil paint, resin; 17" x6.5" x1"

Club [House] Gourd



Artists Eleanor Gale Karrick, Kevin Shluka, Janis Johnson, Kathryn Cellerini Moore

Description Gourd, acrylic paint, found objects, moss and roots; 4"d x14"

I saw Kathryn making a spoon from a gourd and felt inspired to make something from a gourd myself. I chose to make this "house". - Eleanor

Collection of Small Objects



Artists Kimberly Winkle, Jerry Harris, Kate LaGrand, Sally Ault, Eric Lofstrom, Marjin Wall, David Williams, Joe Seltzer, William Moore

Description Wood (maple burl, maple, poplar, buckeye burl, ash, elm), iron, ivory nut, bone;
13" x11" x2.25"

Composition of Doodads



Artists Kimberly Winkle, David Williams

Description Wood (poplar and oak), milk paint, gold leaf; 9.5" x4" x2"; Live Auction Item

Concrete Doesn't Burn



Artists Eleanor Gale Karrick, Rosey Covert, Kathleen Abood

Description Acrylic paint, reeds, acrylic mediums; 14" x26" x2.5"

This piece focuses on how most man-made materials/structures/etc. outlast nearly everything found in nature. In particular, this piece focuses on concrete and how fragile nature is when pitted against concrete structures. At the end of the day, in the event of a fire, concrete conquers the fields and forests.

Copper Knit Spoon



Artists Janis Johnson, Cydney Gordon

Description Wool and silk yarns (handspun); 3.5" x1.5" x2"; spoon project

Janis and Cydney collaborated to develop a pattern for knitting a spoon – this is the result. The yarn was spun at Frogwood 2016.

Crystal Springs



Artists Angelita Surmon, Owen Lowe

Description Acrylic on steel, wood (dyed maple and padauk); 6" x5.5"

Cube for Greg and John

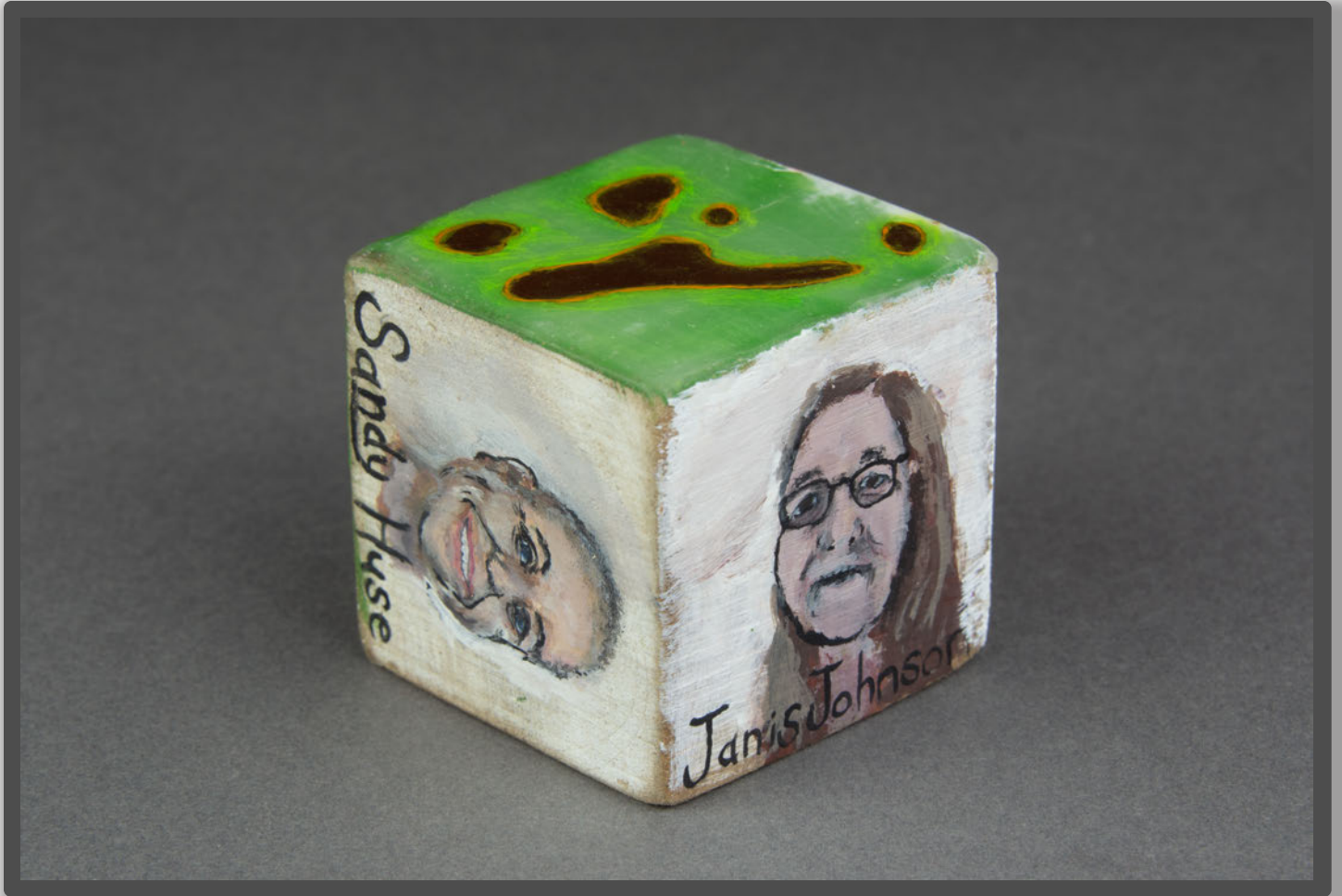


Artists Eleanor Gale Karrick, Lisa Marie Sipe, Kathryn Cellerini Moore, Sandy Huse

Description Wood block, acrylic paint, encaustic, gel ink; 2" x2" x2"

Originally I had intended to portray everyone participating in this year's Frogwood on blocks such as these. Later, realizing the full scope of the project I'd chosen, I decided to focus on these first three blocks. I am hoping to try this portraiture project again and catch that white whale, which has escaped me this year. – Eleanor

Cube for Sandy and Janis



Artists Eleanor Gale Karrick, Lisa Marie Sipe, Kathryn Cellerini Moore, Sandy Huse

Description Wood block, acrylic paint, encaustic, gel ink; 2" x2" x2"

Cube for Scott



Artists Eleanor Gale Karrick, Lisa Marie Sipe, Kathryn Cellerini Moore, Sandy Huse

Description Wood block, acrylic paint, encaustic, gel ink; 2" x2" x2"

Cumulus Catch



Artists Sally Ault, Winona Hwang, Greg Wilbur

Description Wood (purpleheart), silver; 11" x2" x1"; spoon project

Curving Spoon



Artists Joe Seltzer, Rick Crawford, Robert Chiavarini

Description Wood (maple); 8" x 2" x 3/4"; spoon project

Demi-Tasse



Artists Sally Ault

Description Wood (purpleheart); 2" x 3/4" x 3/4" spoon project

Disco Kitchen Buddha



Artists Kathleen Abood, MaryJo Lake, Tai Lake, Sandy Huse

Description Glass mirror, milk paint; 13" x3" x2"; spoon project

Disco Kitchen Buddha is a joyful household shine for happy family meals together.

Distillery of Love: A Spooner Still



Artists Steve Talbot, Sally Ault, Jerry Harris, Steve Newberry, Rose Covert, Kevin Shluka, Greg Wilbur, Eleanor Karrick

Description Copper, wood, acrylic paint, cotton thread; 24" x20" x10"

Drawing Set



Artists Rory Sparks

Description Paper, spider webs, paint, wood, feather (turkey), linen, lichen. Spider web coloring book, turkey feather brush, and staghorn lichen ink; 8.5" x5.5" paper, 10" brush, 2oz. bottle ink

Driven By Lilne



Artists Lisa Marie Sipe, Angela Ridgway, Bill Moore

Description Photography, encaustic, wood, brass paint; 8" x9.5" x7"

We both fell in love with the lines of the vase that Bill Moore made many years ago. We were determined to find a way to use the form and honor the lines that drew us in.

Earth to...



Artists Winona Hwang

Description Tree root, copper, brass, sterling silver; 12" x3" x1"; spoon project

Embraced



Artists Lisa Marie Sipe, Carol Horvath

Description Wood, leather, encaustic; 4" x4" x2.5"

This piece is about the preciousness of nature. By weaving around a piece of driftwood it is marked as seen and important.

Emergence



Artists John Wirth, Steve Newberry, Winona Hwang

Description Copper, wood (black walnut), gold leaf, glass; 4"d x18"

Enchanted



Artists Rose Covert

Description Willow, bark (willow and cedar); 8" x2" x1"; spoon project

Enroute



Artists John Wirth, Janet Ronacher

Description Pewter, bark & root (wild cherry); 2"d x4"

Fan Y'All



Artists Kate LaGrand, Peter Underwood, Marjin Wall

Description Wood, steel, milk paint; 14" x11" x9"

Fire Eater



Artists Steve Newberry, Greg Wilbur

Description Copper, reduction patina; 3" x 1" x 3/4"; spoon project

First Cradle



Artists Steve Newberry, Sandy Huse

Description Wood (cherry, hazelnut), silver, pewter; 12" x9" x5"

Five Mountains



Artists Peter Underwood, Greg Wilbur, Robert Chiavarini

Description Steel, copper, wood; 28"d x2"; Live Auction Item

The circle of life – this piece reminds of our connection with nature: indoors and out.

Fresh Squeeze



Artists Kate LaGrand, Lisa Marie Sipe

Description Wood, metal, encaustic, milk paint; 8"x 6" x2"

Gate Chime



Artists Winona Hwang, Geoffrey Bowton, Greg Wilbur, Nizan Lilie, John Wirth

Description Steel, brass; 36 "x16" x12"

This chime is intended for use in three different ways: it can rattle on an opening and closing gate; it moves in the wind; and it can be activated by the human hand.

Gear Head



Artists Rick Crawford, Greg Wilbur, Ron Gerton, Steve Newberry

Description Wood (loquat), copper wire, brass, cast iron; 16" x22" x16"

Gilded Olive Green & Red Bangle Trio



Artists Kimberly Winkle, Marjin Wall

Description Wood (cedar), milk paint; 2.75"d x3/4", 2.75"d x1/2", 2.75"d x3/8"

Golden Paws



Artists Lisa Marie Sipe, Carol Horvath

Description Cotton, paper, paint, waxed linen; 9"d x5"

Golden Spoon



Artists Cydney Gordon, Janis Johnson

Description Wool and silk yarns (handspun); 6" x2"x 2.5"; spoon project

Ha' Penny Dreams



Artists Sally Ault, Kevin Shluka

Description Copper, steel, wood; 10" x5"d

Horn of Plenty



Artists Jerry Harris, Greg Wilbur

Description Wood (ash), Copper, Brass; 5" x3" x2"; spoon project

Hot Potato Spoon



Artists Geoffrey Bowton

Description Steel, burlap, found object; 14" x6" x6"; spoon project

Hygge #1



Artists Scott Rumage, Stephen Jones

Description Copper; Hygge ("Hew-ga"); 2.25" x2.25" x10"; spoon project

Hygge #2



Artists Scott Ramage, Sandy Huse, Tom Willing

Description Wood (maple), copper; 4"d x3"

I Am Specimen I



Artists Marjin Wall, Kathleen Abood, Carol Horvath, Eleanor Karrick

Description Wood, paint, brass screen, vintage calipers tool; 10" x10" x4"

"Nature and woman provide endless opportunities for creative inspiration." – Julia Atwood

If I Had a Hammer



Artists Steve Jones, Sally Ault, Rick Crawford, David Williams, Tami Dean

Description Brass, wood (walnut and rosewood); 12" x6" x12"

I was inspired by vivid memories of my grandmother's dinner gong that was at just my eye-level and had a beautiful tone. - Steve

In the Soup Spoon



Artists Kevin Shluka

Description Concrete; 4" x7.5" x19"; spoon project

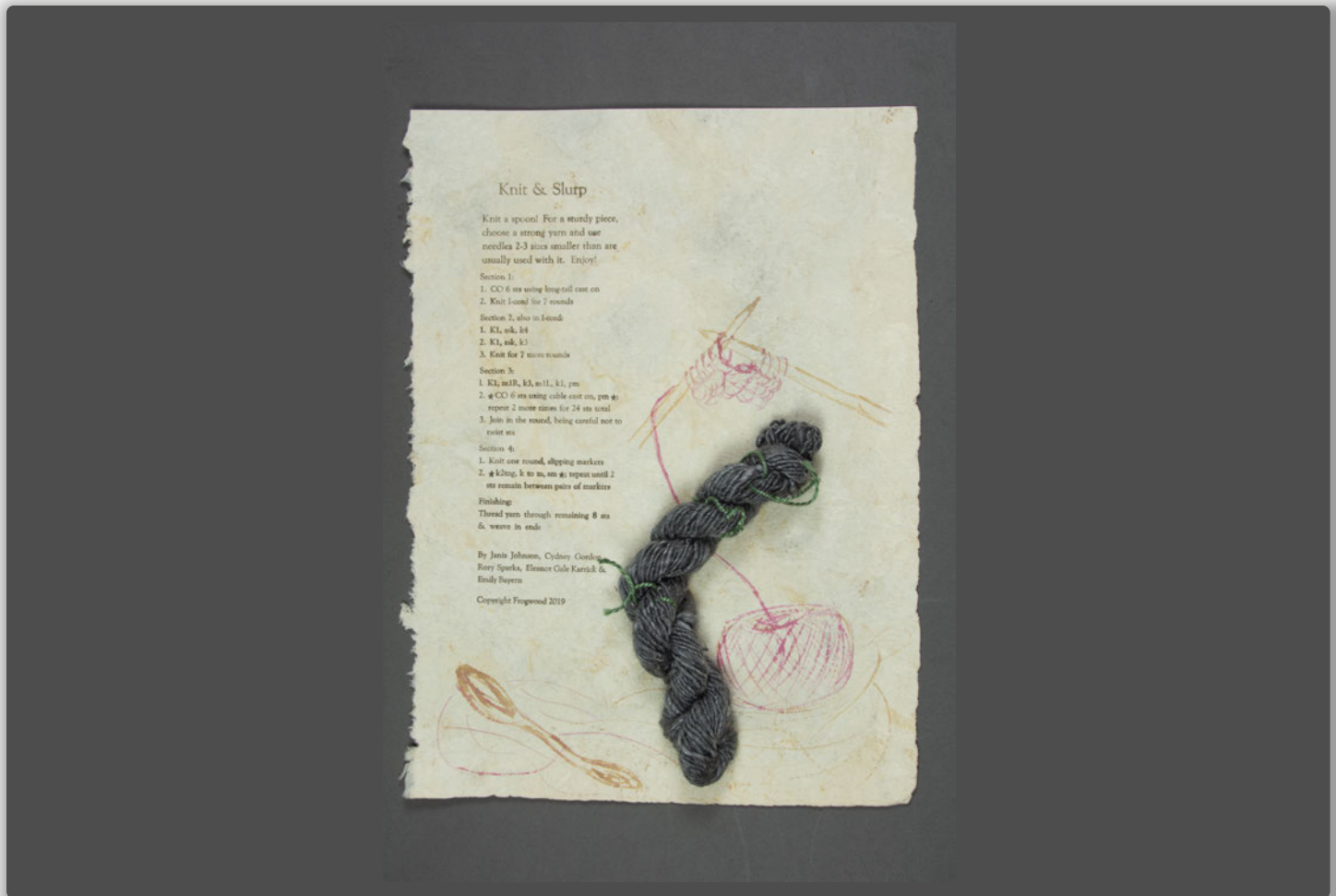
It's a Wrap



Artists Janet Ronacher, Robert Chiavarini, Shannon Weber

Description Wood (Douglas fir and assorted), bark (wild cherry); 14" x18" x40"

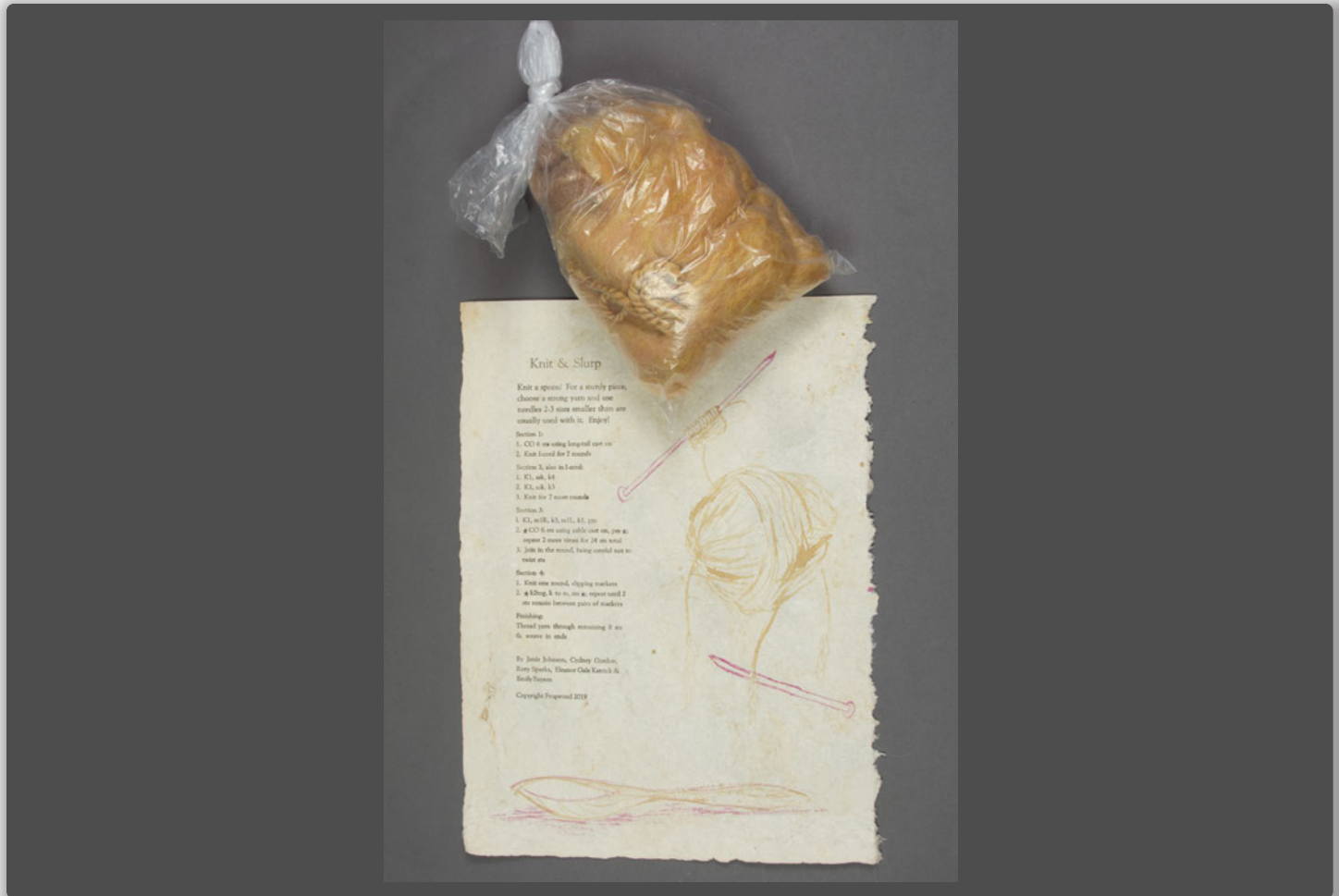
Knit & Slurp (knitting pattern 1)



Artists Janis Johnson, Cydney Gordon, Rory Sparks, Eleanor Gale Karrick, Emily Bayern

Description Amate bark paper, letterpress, yarn (wool and silk)

Knit & Slurp (knitting pattern 2)



Artists Janis Johnson, Cydney Gordon, Rory Sparks, Eleanor Gale Karrick, Emily Bayern

Description Amate bark paper, letterpress, yarn (wool and silk)

Knit & Slurp (knitting pattern 3)



Artists Janis Johnson, Cydney Gordon, Rory Sparks, Eleanor Gale Karrick, Emily Bayern

Description Amate bark paper, letterpress, yarn (wool and silk)

Knotted Willow



Artists John Wirth, Rose Covert, Carol Horvath

Description Willow, caning; 6"d x1"

Last Nail in the Coffin



Artists Peter Underwood, Kathryn Cellerini Moore

Description Wood, copper, acrylic, found object; 10" x6.75" x10"

Late Evening D-Light



Artists Steve Talbot, Jerry Harris, Sally Ault

Description Copper, glass, plastic, lacquer; 3.75"d x15.75"

Listen to Reason



Artists Winona Hwang, Kathryn Cellerini Moore

Description Copper, steel, glass, wood, plant material, feather; 12" x13" x4"

Liz Taylor Collection



Artists Peter R. Underwood

Description Shell, driftwood, acrylic; 14" x4" x2"; spoon project

Miss CAN ada



Artists Ron Gerton

Description Aluminum; 16"d x28"

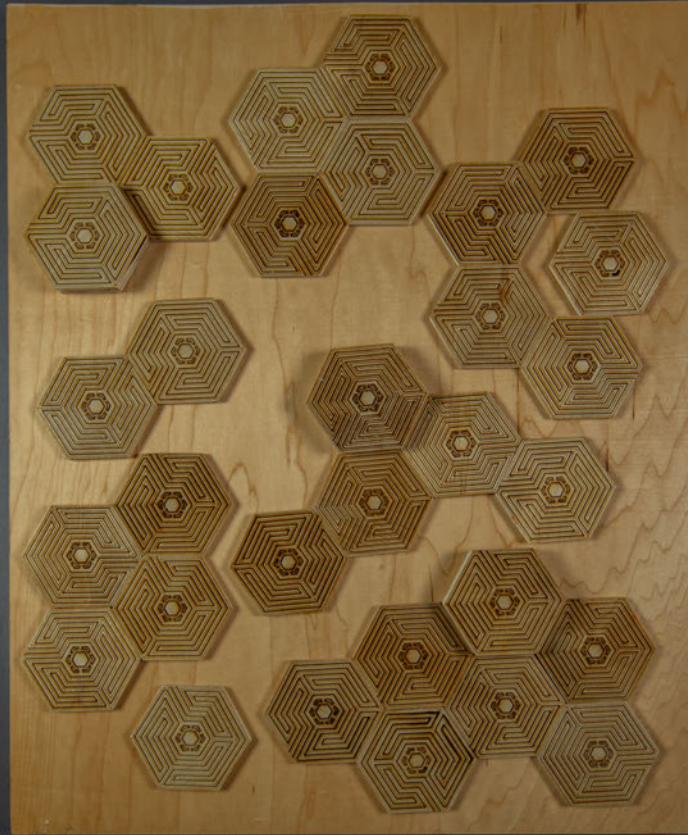
Mother of All Spoons



Artists Marjin Wall, Kim Winkle

Description Wood (maple), milk paint, gold leaf; 14" x3" x1"; spoon project

Moving the Pieces Around



Artists Joe Seltzer, Ron Gerton, Kimberly Winkle

Description Found objects, wood (maple); 22" x27" x1"

First the pieces were going to be a tabletop; then it was suggested it looked good as a wall piece. Then in moving the pieces around the openings were interesting and after several more iterations, a final arrangement was decided upon and the pieces glued in place.

Multitool



Artists Kathryn Cellerini Moore, Carol Horvath, Jesse Felling, Kathleen Abood

Description Gourd, copper, synthetic fiber; 11" x5" x5"; spoon project

Musica Spoon



Artists John Wirth

Description Brass; 5" x2" x2"; spoon project

Nevelson Meets Seuss



Artists Sally Ault

Description Paper, wood; 16" x12" x2"

As the Cat in the Hat visited Sally and her brother, chaos ensued and there was some disorder!

Not Forgotten



Artists Robert Chiavarini, Owen Lowe, Dave Williams, Binh Pho (deceased), Greg Wilbur

Description Wood (ash and tupelo), copper, granite; 22" x11" x12"; Live Auction Item

This piece was started in 2015. It was painted by Binh Pho, was captured by the North Vietnamese as a teenager, escaped to freedom and began a new life in the United States as an artist. Dragonflies were a common theme in his artwork. Binh died in 2017.

Not Your Grandmother's Jar



Artists Steve Jones, Robert Chiavarini

Description Brass, copper, wood (black walnut); 10" x7" x7"

My three favorite materials – brass, copper, and wood. The jar's shape is one of my favorites.

Olive Scoop w/Spanish Olive w/Pimento



Artists Janet Ronacher

Description Telephone wire, glass, Corian®; 4" x2" x2"; spoon project

On the Beach



Artists Janis Johnson, Janet Ronacher, Tami Dean, Steve White

Description Linen, silk, shell, beads, driftwood; 14" x12"

Ondina



Artists Kevin Shluka, David Williams

Description Wood, concrete; 10" x3" x4"

One Man's Junk -- Is Another Woman's



Artists Sally Ault, David Williams, Tom Willing, Kimberly Winkle, Marjin Wall, Tai Lake

Description Wood, metal, coral, stone; 18" x8" x10"

When I find pieces with lively shapes and textures, I think they need to live together.

One Sip Only



Artists Robert Chiavarini

Description Wood (rosewood); 13" x3" x2"; spoon project

One... Two... Three...



Artists Winona Hwang, John Wirth, Robert Chiavarini

Description Pewter, wood (Walnut, Spalted Maple, Birch); 5" x4" x2"

Open Tab



Artists Eric Lofstrom, Mike Free, Kevin Shluka, Neal Fegan

Description Steel, stone, gourd, cement, wood (maple), acrylic; 38" x12" x14"; Live Auction Item

Contemplation of our relationship with Earth's precious resource of water.

Organic Meets Crystalline



Artists Mike Free

Description Wood; 6.75" x3" x2.25"; spoon project

Osseous Curio



Artists Owen Lowe

Description Bone; 3" x 1/2" x 1/4"; spoon project

I have long been fascinated with ancient tools and the materials used to fashion them. Today we so depend on plastics when traditional materials are so much more durable, beautiful, and sustainable.

Perpetuity



Artists Angela Ridgway, Kevin Shluka, Lisa Marie Sipe

Description Steel, wood, acrylic paint; 14" x10.5" x8.5"

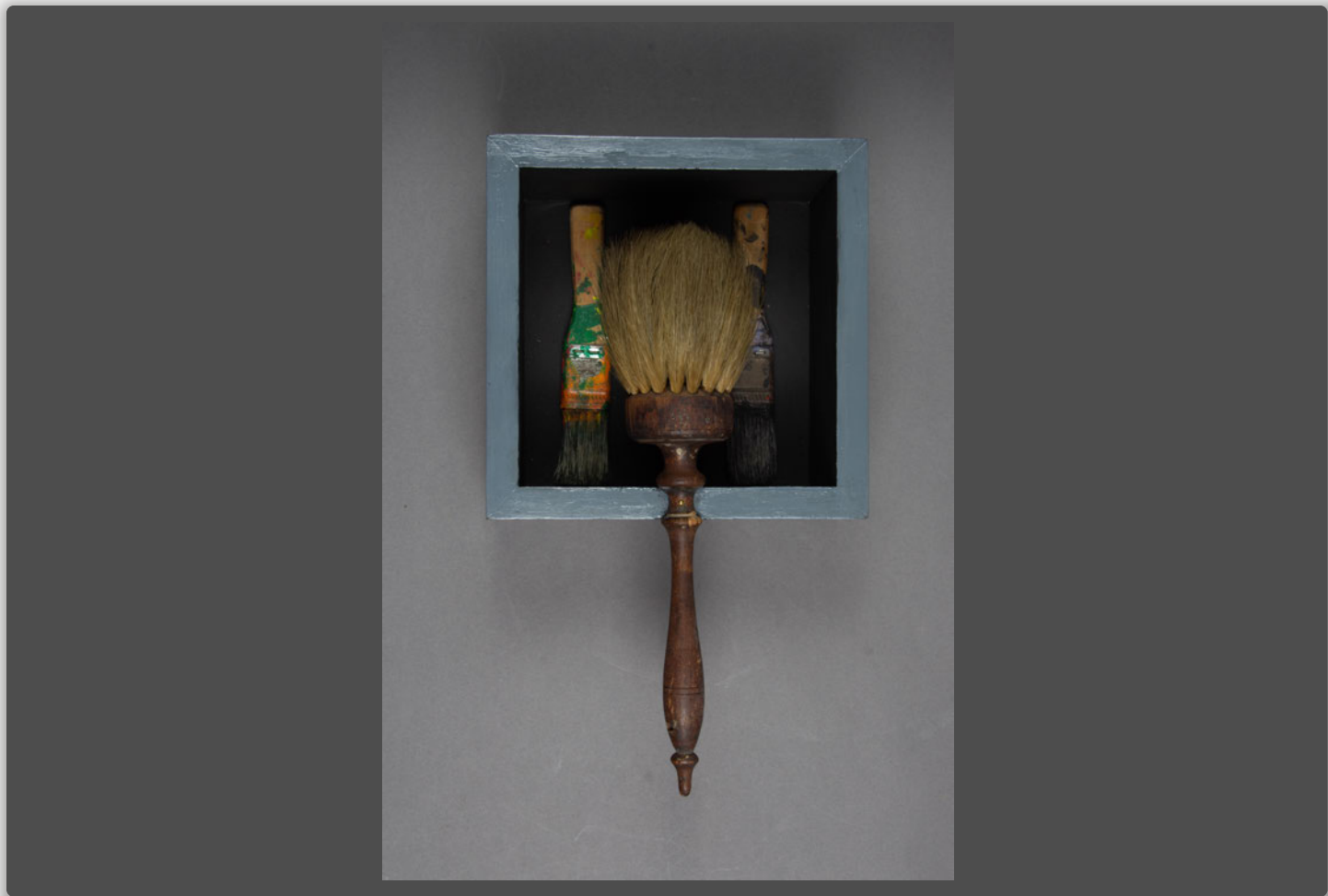
Pink Bracelet



Artists Julia Abood

Description Wood (madrone), milk paint; 3"d x 3/4"

Pintar - To Paint



Artists David Williams, Kathleen Abood, Winona Hwang, Mike Free

Description Wood, paint brush; 12" x7" x6"

Pipe Dream



Artists Sandy Huse, Kate LaGrand, Jerry Harris, Kathryn Cellerini Moore

Description Iron, bowling ball, copper, yarn, wire, wood, paint, found objects; 42" x12" x17"

Pipe With Silver



Artists Bill Moore, Ron Gerton, April Ottey

Description Briar, sterling silver, acrylic delrin; 6" x2.5" x1"

Pod #1



Artists Kathryn Cellerini Moore, Sandy Huse

Description Wood, ink, moss; 3/4"d x2"

Pod #2



Artists Kathryn Cellerini Moore, Sandy Huse

Description Wood, ink, moss; 1"d x2.25"

Progression of Life



Artists Robert Chiavarini, Kathryn Cellerini Moore

Description Wood, spray paint; Set of 3: 6" x 5" x 1", 5" x 4" x 1", 4" x 3" x 1"

Propelled



Artists Steve White, Marjin Wall, Kimberly Winkle, Sally Ault

Description Brass, wood (mahogany and walnut); 15"d x24"; Live Auction Item

Makers of tables know how important a heavy base is to the usefulness of a table. When it is also gorgeous, like this brass pump impeller, who could resist?

Quail: "I Love Your New Handbag!"



Artists Tai Lake, Tami Dean

Description Wood (maple, walnut), acrylic rod, silver, copper, music strings; 28" x10" x8"

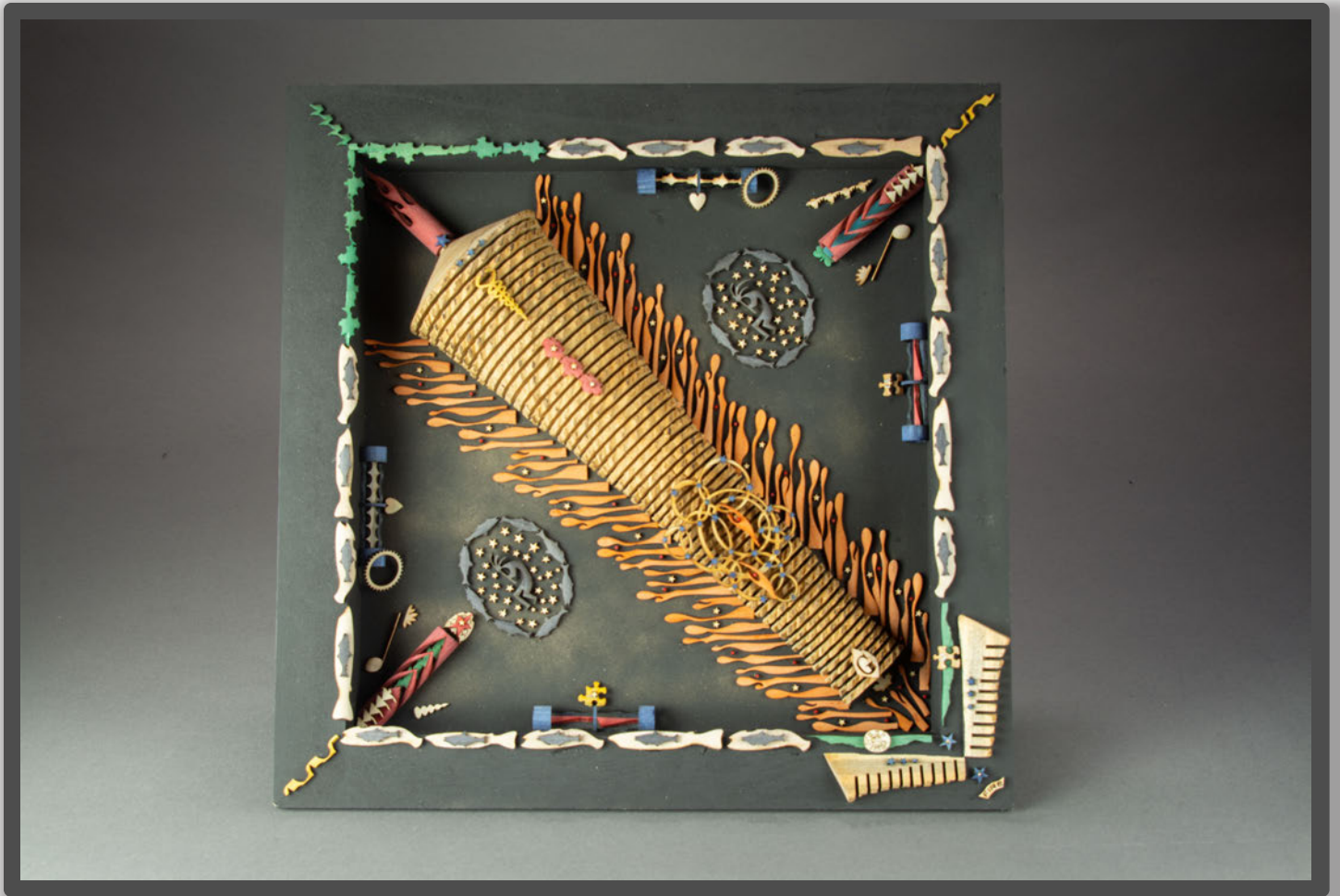
Rebirth



Artists Robert Chiavarini, John Wirth, Steve Jones, Tami Dean, Greg Wilbur, Lee Mahoney

Description Copper, brass, wood; 18" x4" x5"

Recycling the Prototype 53 Gear Bike Sprocket



Artists Ron Gerton, Rick Crawford

Description Wood (loquat and maple); 15" x15" x1.5"

Red Mallet & Wood Block



Artists David Williams, Kathleen Abood, Mike Free

Description Wood block, mallet; 3" x7.5" x6.5"

Pulling cast-away wood forms & used equipment together provides new utility for both!

Reflective Pool Table



Artists David Williams, Janet Ronacher

Description 2018 Artwork, Metal, formed glass, wood, rawhide leather, vintage plastic buttons;
13" x13" x28"

Rock Box



Artists Kimberly Winkle, Michael de Forest

Description Wood (poplar), milk paint; 5.5" x10" x3.5"; Live Auction Item

Rock Island Line



Artists Shannon Weber, Janet Ronacher

Description Reed, bark, rock; 16" x9" x6"

Rotten Spoon



Artists Jerry Harris

Description Wood (lilac); 3" x1" x12"; spoon project

Salt Spoon



Artists Tom Willing, Robert Chiavarini

Description Wood (goncalo alves), edible oil finish; 7" x 1/2" x 1/2"; spoon project

Saving the Moment



Artists Janet Ronacher

Description Bark, rock, waxed linen; 13" x2" x1.5"

Scarlet Cocoon



Artists Kimberly Winkle, Marjin Wall

Description Wood (pear), milk paint, acrylic paint; 5"d x3.5"

Scrabble Spoon



Artists Kimberly Winkle

Description Mixed media collage; 12" x3" x1"; spoon project

Sea Skate



Artists Bill Moore, Rick Crawford

Description Sea shell, wood (ebony), leather, brass, magnets; 12" x6" x3.5"; spoon project

Seastar or Sea, Star or See, Star



Artists Kathryn Cellerini Moore, Rick Crawford, Tami Dean, Peter Underwood, Robert Chiavarini

Description Wood, ink, gesso, gold leaf, acrylic, brass; 5.5" x9" x3.5"

Secondary Blocks



Artists Rick Crawford (2), Joe Seltzer, Peter Underwood, Kathleen Abood, Owen Lowe, Angela Ridgway, Lisa Marie Sipe, Robert Chiavarini, Sandy Huse

Description Wood (maple), pyrography; 2" x2" x2"; block project

Seed of Change



Artists Kate LaGrand, Marjin Wall

Description Wood, steel, milkpaint; 5.5"d x10"; Live Auction Item

Shell & Copper Fusion Spoon



Artists Cydney Gordon, John Wirth

Description Copper, shell; 10" x2" x1.5"; spoon project

Shield Form



Artists Jeffrey Weber, Greg Wilbur, Joe Seltzer

Description Wood (spalted maple), brass, oil, paint; 26" x15" x11"

The shield is rooted in both armoury and heraldry. It is a powerful motif to engage the needs of ego and defense, both of which are legitimate – yet potentially conflicting – elements of the human condition.

Siamese Spoon



Artists Steve White

Description Wood (mahogany); 16" x2.5" x1.5"; spoon project

Sieve



Artists Angela Ridgway

Description Steel, copper; 6" x2.5" x2"; spoon project

Sipping Spoon



Artists Eric Lofstrom

Description Cherry; 11.5" x2.5" x3/4"; spoon project

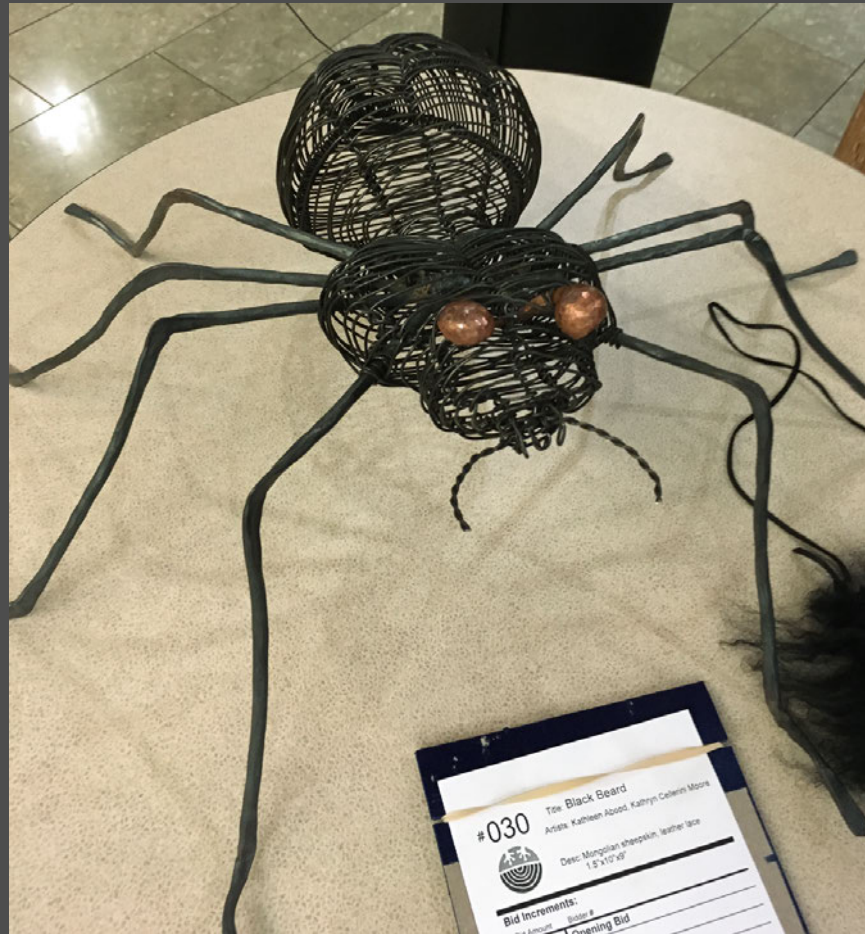
Skje



Artists Lisa Marie Sipe

Description Driftwood, leather, wool; 10" x3/4" x1"; spoon project

Spider



Artists Francisco Puentes, Greg Wilbur, Nitzan Lilie

Description 2018 artwork, Steel, forged iron, raised copper; 23" x25" x8"

Spoon



Artists Steve Newberry, Greg Wilbur

Description Multi-axis wood (walnut), milk paint, copper; 4.5" x3/4" x3/4"; spoon project

Spoon Assemblage



Artists Jerry Harris, Greg Wilbur; Cydney Gordon, John Wirth; Rick Crawford, Kathryn Cellerini Moore, Tami Dean, Eric Loftstrom; Angela Ridgway

Description Horn of Plenty, Shell & Copper Fusion Spoon, Topo Spoon, Sieve

Spoon Assemblage 2



Artists Sally Ault; Tom Willing, Robert Chiavarini; Greg Wilbur, Kathleen Abood, Tami Dean; Steve Newberry, Greg Wilbur; Owen Lowe

Description Demi-Tasse, Salt Spoon, Aloha Spoon, Sugar Anyone?, Osseous Curio

Spoon Assemblage 3



Artists Winona Hwang; Ron Gerton; Eric Lofstrom; Rose Covert; Sally Ault, Winona Hwang, Greg Wilbur

Description Earth to..., Star Spangled Spoon, Sipping Spoon, Enchanted, Cumulus Catch

Spoon Assemblage 4



Artists Tai Lake, Sandy Huse; Steve White; Sally Ault, Tami Dean, Greg Wilbur, Rick Crawford; Marjin Wall, Kim Winkle

Description Cinderella Spoon, Siamese Spoon, Swoon, Mother of All Spoons; Live Auction Item

Spoon Assemblage 5



Artists Sandy Huse; Lisa Marie Sipe; Steve Newberry, Greg Wilbur; Neal Fegan; Cydney Gordon, Janis Johnson

Description Starvation Spoon, Skje, Spoon, Stone Spoon, Golden Spoon

Spoon At Yar Own Risk



Artists Sandy Huse, Kevin Shluka

Description Concrete, antler, dye; 6" x12" x22"; spoon project

Spoon Doggle



Artists Tami Dean

Description Sterling silver, wood (padauk and poplar); 2.5" x1.5" x1/2"; spoon project

Spoons Delight



Artists Steve Jones

Description Copper; 6" x1.5" x1.5"; spoon project

A most convenient shape – holds a lot of liquid, easy to hold, easy to drink from, compact, sturdy tube design, looks great!

Star Spangled Spoon



Artists Ron Gerton

Description Brass, sterling silver, dyed maple; 2.5" x1.25" x9"; spoon project

Starvation Spoon



Artists Sandy Huse

Description Bone, copper, waxed linen thread, dye; 2" x7" x1/2"; spoon project

Stickleback Planter Stand



Artists Scott Ramage

Description Copper; 10"d x 2.5"

Stone Spoon



Artists Neal Fegan

Description Rock; 8" x3" x2"; spoon project

Straight Arrow



Artists John Wirth, Winona Hwang

Description Copper (fold-formed): Belt buckle; 2" x2.25" x1/2"

Study in Spheres



Artists Jerry Harris, Greg Wilbur, Nitzan Lilie, Steve Talbot

Description Wood (cherry and blackwood), copper, glass, steel, reed, clay; 10"d x7"

Succulent Brooch



Artists Kimberly Winkle, Tami Dean, Ron Gerton

Description Copper, wood (poplar), milk paint, silver; 10" x3" x1.5"; Live Auction Item

Sugar Anyone?



Artists Steve Newberry, Greg Wilbur

Description Pewter; 2.75" x1" x1/2"; spoon project

Swoon



Artists Sally Ault, Tami Dean, Greg Wilbur, Rick Crawford

Description Wood (rosewood), copper; 8" x6" x1"; spoon project

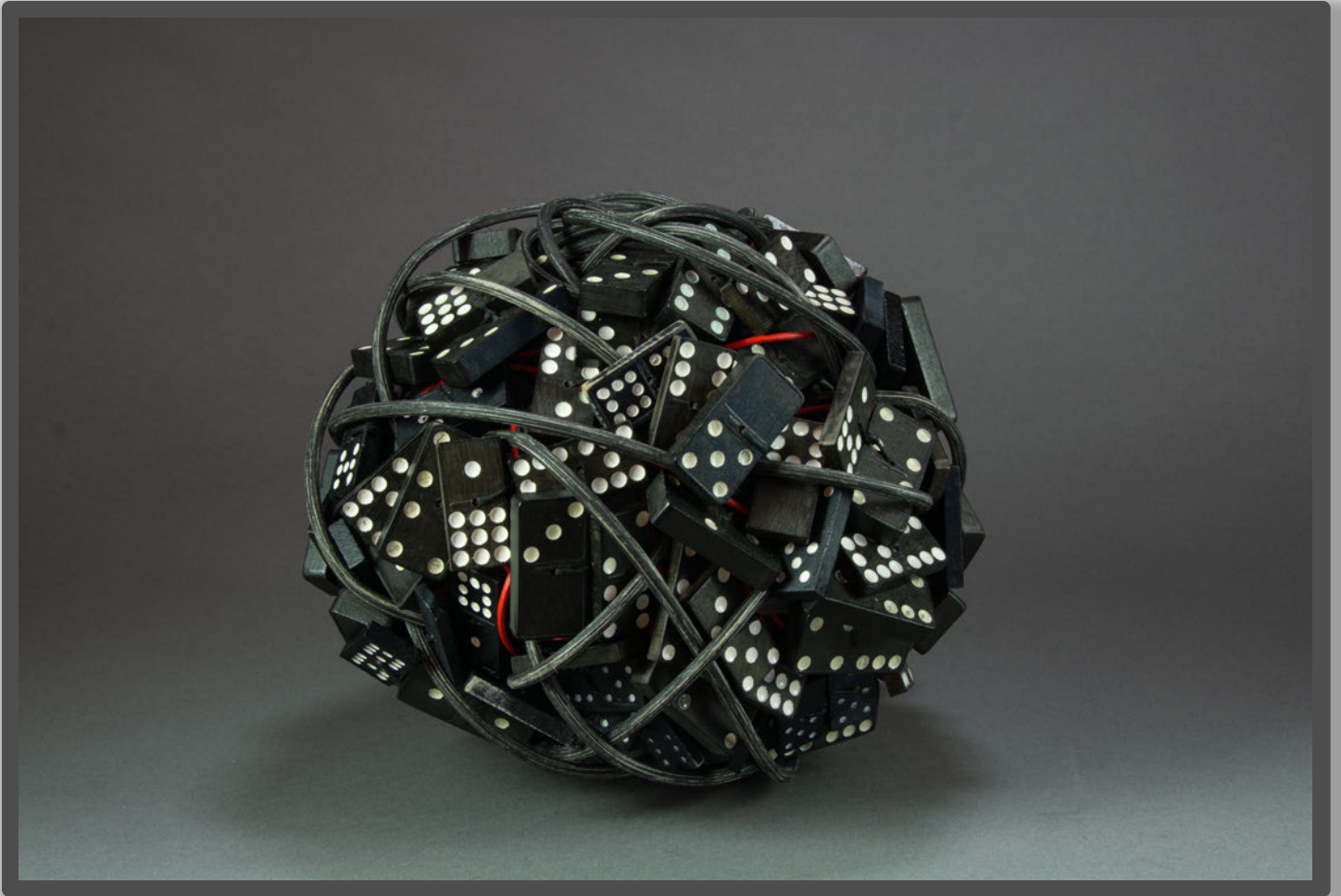
Tee for One



Artists Sandy Huse

Description Wood, golf tees, wax; 17" x12" x12"

The One



Artists Shannon Weber, Janet Ronacher

Description Reed, linen thread, paint, wood; 10" x10" x6.5"; Live Auction Item

A woven structure with drilled game pieces – love to play board games :)

Three Wishes



Artists Sally Ault, David Williams

Description Wood (ebonized fir, rosewood), copper, glass, shell; 3" x14" x8"

With my three wishes I hope for serenity, creativity, and a serious reduction of conflict among all of us who populate this planet.

Topo Spoon



Artists Rick Crawford, Kathryn Cellerini Moore, Tami Dean, Eric Loftstrom

Description Wood (Douglas fir), gesso, paint; 3" x9" x1.5"; spoon project

Topography of Spirit (dyptic)



Artists Lisa Marie Sipe, Kathryn Cellerini Moore

Description Ink on paper, thread, encaustic, handmade paper on panel; 6" x6" x1.5"

Tuning Fork



Artists Kate LaGrand, Peter R. Underwood, Kim Winkle

Description Steel, wood, metal, paint; 18" x12" x3"

This pitchfork screamed at me from under the table, "I'm alive! Please save me!" I see shadows of its former use, penetrating the Earth... we all leave an imprint... - Peter

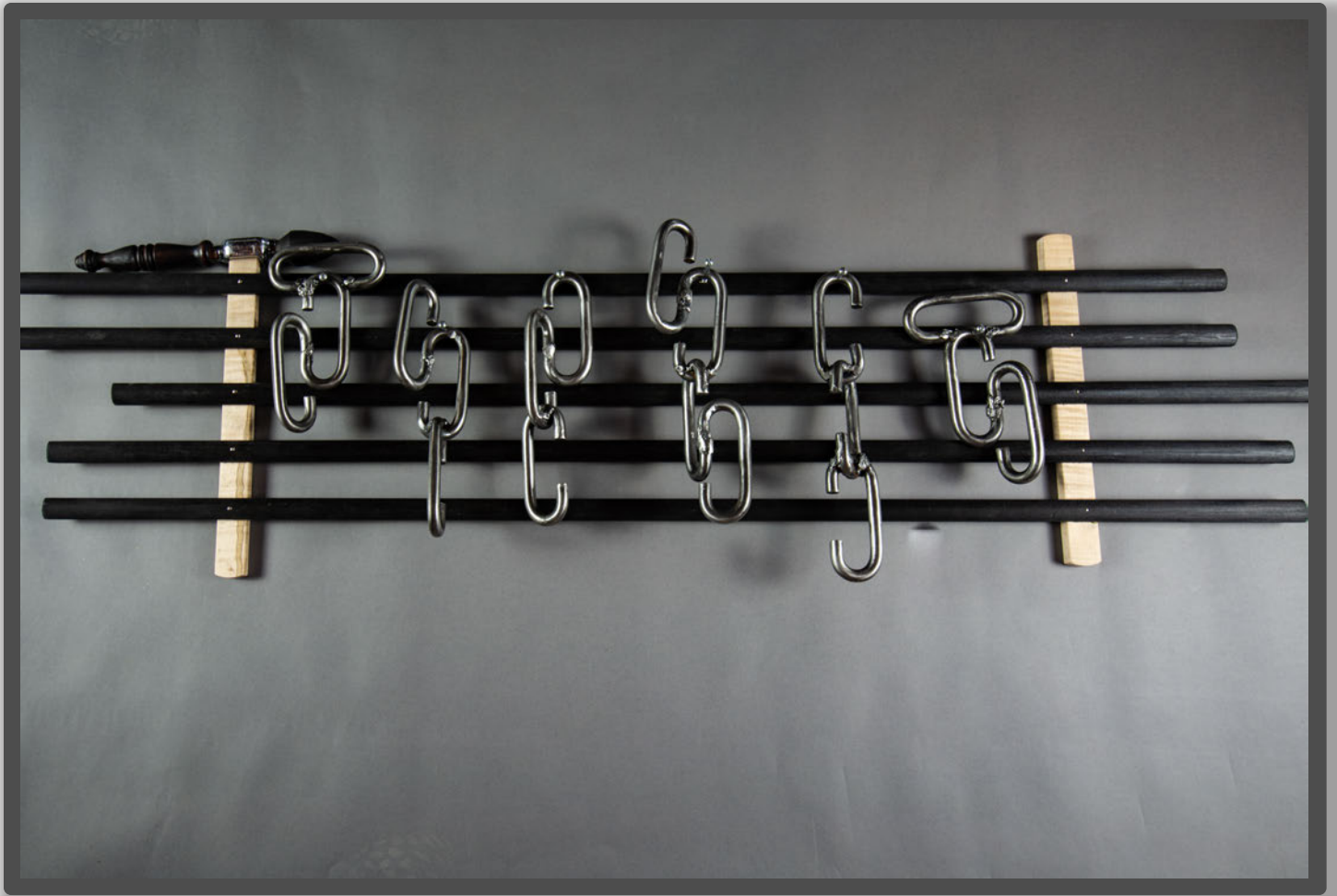
Two Bracelets



Artists Marjin Wall

Description Wood (madrone), milk paint; 3"d x3/4", 3"d x1/2"

Unchained Melody



Artists Joe Seltzer, Tai Lake

Description Steel (found objects), wood (maple and hemlock); 55" x14" x4.5"

Started by Joe as a sculpture then Tai hit two pieces together and they chimed. He said it looked like musical notes on a stanza, so he created the stanza. The metal part of the mallet produces the best sound.

Unexpected Balance



Artists Eric Lofstrom, Jesse Felling, Steve White, Nitzan Lilie, Kevin Shluka

Description Wood (redwood, cottonwood, and pine), steel, plaster; 42" x22" x6"

Inspired by the quest to find balance in life between big and little things... sometimes the little things are heavier than the big things.

Up-Ended



Artists Joe Seltzer, Angela Ridgway

Description Steel; 9" x5.5" x11.5"

Volunteer



Artists David Williams, Kathleen Abood

Description Wood (maple, buckeye); 7" x6" x6"

Perhaps each bowl still longs to grow free into a tree.

Wallflower



Artists Kate LaGrand, Peter Underwood

Description Steel, wood; 14" x6" x5"

Wallflower I



Artists Jesse Felling, Greg Wilbur, Kevin Shluka, Steve White, Carol Horvath

Description Plywood, dye, copper, leather; 24"d x10"; Live Auction Item

Wallflower II



Artists Jesse Felling, Kevin Shluka, Steve White, Carol Horvath

Description Plywood, dye, willow bark; 24"d x10"; Live Auction Item

Wallflower III



Artists Jesse Felling, Tom Willing, Eric Lofstrom, Kevin Shluka, Steve White, Robert Chiavarini

Description Plywood, dye, wood (tupelo), acrylic paint; 24"d x10"; Live Auction Item

We Are All Alien



Artists Kathleen Abood, Lisa Sipe, David Williams, Tai Lake, Steve White

Description Wood, paint, found objects; 22" x12" x2"

This assemblage speaks to the history of United States immigration over the last 500 years.

Weaving Beater Stick



Artists Steve White, Janis Johnson

Description Wood (padauk); 15" x2" x1/4"

Janis asked Steve to make this tool from a scrap on the junk table. She used it for the piece, "On the Beach".

Why Do I Always Get the Bent Utensil?



Artists Steve Newberry

Description Multi-axis wood spoon; 11" x2" x2"; spoon project

Wingspread



Artists David Williams

Description Wood (maple and bloodwood), stone; 24" x15" x3.5"; Live Auction Item

Within



Artists Rose Covert, Kevin Shluka, Angela Ridgway, David Williams, John Wirth

Description Concrete, waxed linen, oil, paint, wood (maple); 26" x11" x12"; Live Auction Item

This represents the moon resting in the arms of the mountain; an egg nestled in the webs of becoming; a dream just hatched, cradled and held. It holds the energy of hard & soft: weight & weightlessness, time & timelessness. Within evokes the experience of being held.

Woven Heart Throb



Artists Janet Ronacher

Description Reed, roots, charcoal; 9"d x12"

You Only Have the Stars



Artists Rory Sparks

Description Wood, paper, cloth, letterpress printing; 3" x2" x1"

Frogwood extends our heartfelt thanks to Shir and Laurence Grisanti, Dana Chamberlin, Michael Rosenfeld, and Neal Fegan for welcoming us at Camp Colton.

We are especially appreciative of Nick Cupell and Phil Cason for the fabulous meals they planned and prepared. Frogwood has the reputation of being the best collaboration in the world when it comes to the food.

Lastly, we owe a great deal of gratitude to Steve Talbot, with Talbot Benefit Auctions, for organizing and running our first real, live auction.



FROGWOOD
an artists' collaborative

Frogwood is a 501c3 public charity dedicated to arts training, education, and collaborative interaction.

All images contained in this publication © 2019 Frogwood and Lee Mahoney. No usage rights are granted for any purpose without express written agreement from Frogwood.